

## SPECIFICATIONS

LOAD SPECIFICATIONS		260 TJ	280 TJ	±
<b>Platform</b>				
- Maximum load capacity in the basket	kg (lbs)	400 (881) <b>(1)</b>	<b>(2)</b>	-
- Maximum wind speed when operating outside	km/h	45		-
- Maximum number of people in the basket (indoor use/ outdoor use)		3 / 3 <b>(1)</b>	<b>(2)</b>	-
- Unladen platform weight	kg (lbs)	16,400 (36,155)	16,650 (36,710)	-
- Maximum authorised tilt in working position	°	4		0.1%
- Maximum slope accessible in transport position with 100 kg (220 lbs) in the basket	%	34.5		-
- Maximum authorised manual force	N	400		-
<b>Wheels</b>				
- Load on one front wheel (transport position)	kg (lbs)	5,675 (12,512)	5,500 (12,126)	10%
- Load on one rear wheel (transport position)	kg (lbs)	2,550 (5,622)	2,800 (6,173)	10%
- Maximum load on one wheel (working position)	kg (lbs)	9,500 (20,944)	10,500 (23,149)	-
- Bearing surface on ground (hard/soft), wheels SOLIDEAL HAULER-SKS (first version)	cm <sup>2</sup>	635/1,471	623 / 1,160	-
- Punching on ground (hard/soft), wheels SOLIDEAL HAULER- SKS (first version)	daN/cm <sup>2</sup>	14.96 / 6.46	16.85 / 9.05	-
- Bearing surface on ground (hard/soft), wheels SOLIDEAL SOLIDAIR AWP (second version)	cm <sup>2</sup>	446/1,125	472 / 1,179	-
- Punching on ground (hard/soft), wheels SOLIDEAL SOLIDAIR AWP (second version)	daN/cm <sup>2</sup>	21.3 / 8.44	22.25 / 8.91	-
<b>(1):</b> PIPE SUPPORT attachment or PANEL SUPPORT attachment not installed, <math>\triangleleft</math> 4-ATTACHMENTS for the specific values when an attachment is installed.				
<b>(2):</b> <math>\triangleleft</math> DIMENSIONS AND DIAGRAM 280 TJ.				
SPEEDS AND MOVEMENTS		260 TJ	280 TJ	±
<b>Driving speed</b>				
- WORKING POSITION speed	km/h	0.8		0.1
- SLOW speed	km/h	1.8		-
- TORTOISE speed	km/h	2.5		0.2
- RAMP speed	km/h	2.5		0.2
- HARE speed	km/h	4.5		0.2
<b>Main arm (telescope extended)</b>				
- Unladen/laden lifting	s	70 / -		5
- Unladen/laden lowering	s	70 / -		5
<b>Main arm (telescope retracted)</b>				
- Unladen/laden lifting	s	45 / -		5
- Unladen/laden lowering	s	42 / -		5
<b>Telescope</b>				
- Unladen/laden extension	s	30 / -		5
- Unladen/laden retraction	s	30 / -		5
<b>Jib - 260 TJ</b>				
- Unladen/laden lifting	s	22 / -	-	5
- Unladen/laden lowering	s	18 / -	-	5
<b>Jib (telescope extended) - 280 TJ</b>				
- Unladen/laden lifting	s	-	30 / -	5
- Unladen/laden lowering	s	-	25 / -	5
<b>Jib (telescope retracted) - 280 TJ</b>				
- Unladen/laden lifting	s	-	23 / -	5
- Unladen/laden lowering	s	-	18 / -	5
<b>Jib telescope - 280 TJ</b>				
- Unladen/laden extension	s	-	16 / -	5
- Unladen/laden retraction	s	-	13 / -	5
<b>Turntable</b>				
- 90° rotation (telescope extended/retracted/retracted and main arm raised)	s	50/30/28		5
<b>Basket</b>				
- Rotation 180° (left/right)	s	14 / 14		5

ENGINE		260 TJ	280 TJ	±
Type		KUBOTA V2403-M		-
Fuel		Diesel		-
Number of cylinders		4		-
Cubic capacity	cm <sup>3</sup>	2,434		-
Idling speed unladen	rpm	1,050		50
Maximum speed unladen	rpm	2,550		20
Power at 3,000 rpm	kW	34.1		-
Maximum torque at 1,600 rpm	N.m	162.5		-
Unladen weight	kg (lbs)	184 (406)		5 (11)
Type of cooling		Coolant		-
Fan		Puller		-
Emissions				
- CO (carbon monoxide)	g/kWh	-		-
- HC + Nox (hydrocarbons + nitrogen dioxide)	g/kWh	-		-
- PT (particles)	g/kWh	-		-
TRANSMISSION		260 TJ	280 TJ	±
Hydrostatic pump				
- Type		BOSCH REXROTH A4VG56		-
- Cubic capacity	cm <sup>3</sup>	56		-
- Maximum unladen flow rate	L/min	-		-
- Maximum pressure	bar	400		5
Hydrostatic motor				
- Type		BOSCH REXROTH or PARKER		-
- Cubic capacity	cm <sup>3</sup>	125		-
Axles				
- Type		DANA SPICER		-
- Reduction ratio		47.06		-
- Pulling force	daN	5,850		-
- Front axle differential		45% limited slip		-
- Rear axle differential		Hydraulic locking 100%		-
Number of front/rear steering/directional wheels		2 / 2		-
Number of front/rear drive wheels		2 / 2		-
Wheels (first version)				
- Type		SOLIDEAL HAULER-SKS 385/45-28		-
- Dimensions (external Ø x width)	mm	1,086 x 370		-
- Inflation		Foam		-
Wheels (second version)				
- Type		SOLIDEAL SOLIDAIR AWP		-
- Dimensions (external Ø x width)	mm	1,025 x 365		-
- Inflation		Solid tyre		-
BRAKE SYSTEM (parking brake)		260 TJ	280 TJ	±
Type of brake		Negative		-
Type of control		Hydraulics		-
Braked wheels front/rear		2 / 2		-
Release (freewheel mode)		Yes, manual		-
Braking torque	daN.m	3,100 on wheel		-

HYDRAULIC CIRCUIT		260 TJ	280 TJ	±
Auxiliary hydraulic pump				
- Type		BOSCH REXROTH		-
- Cubic capacity	cm <sup>3</sup>	28		-
- Maximum unladen flow rate	L/min	70		-
Distributor				
- Type		proportional electrovalve		-
- Maximum pressure	bar	250		5
Filtration				
- Suction	µm	125		-
- Pressure	µm	10		-
- Operation	µm	10		-
ELECTRIC CIRCUIT		260 TJ	280 TJ	±
Battery				
- Type		EXIDE		-
- Capacity C5	Ah	145		-
- Capacity C20	Ah	-		-
- Rated voltage	V	12		-
Alternator				
- Type		-		-
- Maximum current	A	60		-
- Rated voltage	V	12		-
Starter				
- Type		Electric		-
- Power	kW	1.4		-
- Voltage	V	12		-
BACKUP PUMP		260 TJ	280 TJ	±
- Type		Electric		-
- Cubic capacity	cm <sup>3</sup>	2		-
- Power	kW	1.3		-
- Voltage	V	12		-
- Pressure 150 bars	A	-		-
DIMENSIONS		260 TJ	280 TJ	±
Basket				
- External dimensions (length x width)	mm	2,300 x 900		1%
- Floor dimensions (length x width)	mm	2,235 x 840		1%
- Rotation angle right/left	°	90 / 90		-
Jib displacement angle up/down	°	70,3 / 63	56,8 / 62	1%
Turntable rotation angle	°	Continuous rotation		-
Other dimensions: <img alt="arrow pointing left" data-bbox="100 688 115 703"/> DIMENSIONS AND DIAGRAM 260 TJ and DIMENSIONS AND DIAGRAM 280 TJ				
NOISE AND VIBRATION		260 TJ	280 TJ	±
Acoustic power level LwA (first version / second version)	dB	105 / 106		-
Vibrations affecting body in the basket				
- Average quadratic values for the body	m/s <sup>2</sup>	<0.5		-

EQUIPMENT	260 TJ	280 TJ	±
Orange rotating beacon light	Standard		-
Hour meter	Standard		-
Proportional diesel level display	Standard		-
Fuel/battery low level alarm	Standard		-
Tool box in basket	Standard		-
User interface (diagnostic aid)	Standard		-
Oscillating front axle	Standard		-
Turntable orientation more than 90° indicator light	Standard		-
Remote control unit	Standard		-
Permanent orange rotating beacon light	Option*		-
All movements alarm	Option*		-
Driving/steering alarm	Option*		-
Key lock for turntable covers	Option**		-
Battery cut-off	Option		-
230 V outlet in basket	Option		-
Generator 110 V/3.5 kW (UK electric power socket)	Option**		-
Generator 220 V/3.5 kW	Option**		-
Generator 220 V/5 kW	Option**		-
Working light	Option		-
Secondary protection system SPS - first version "SafeManSystem"	Option**		-
Secondary protection system SPS - second version	Option**		-
Pipe support	≤ 4 - Attachments		-
Panel support	≤ 4 - Attachments		-

\*: ≤ DEFINITION OF SUB-MENUS.

\*\* : ≤ OPTIONS.

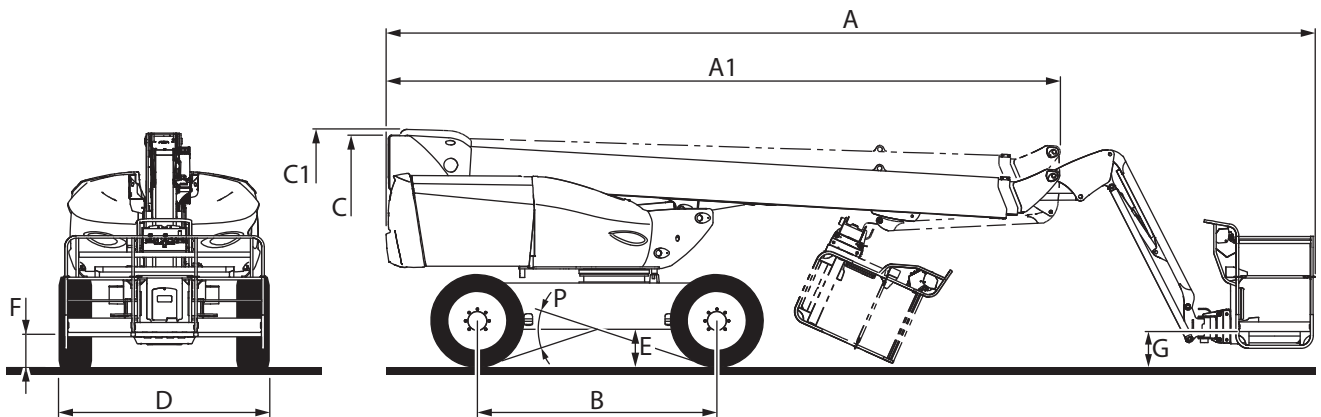
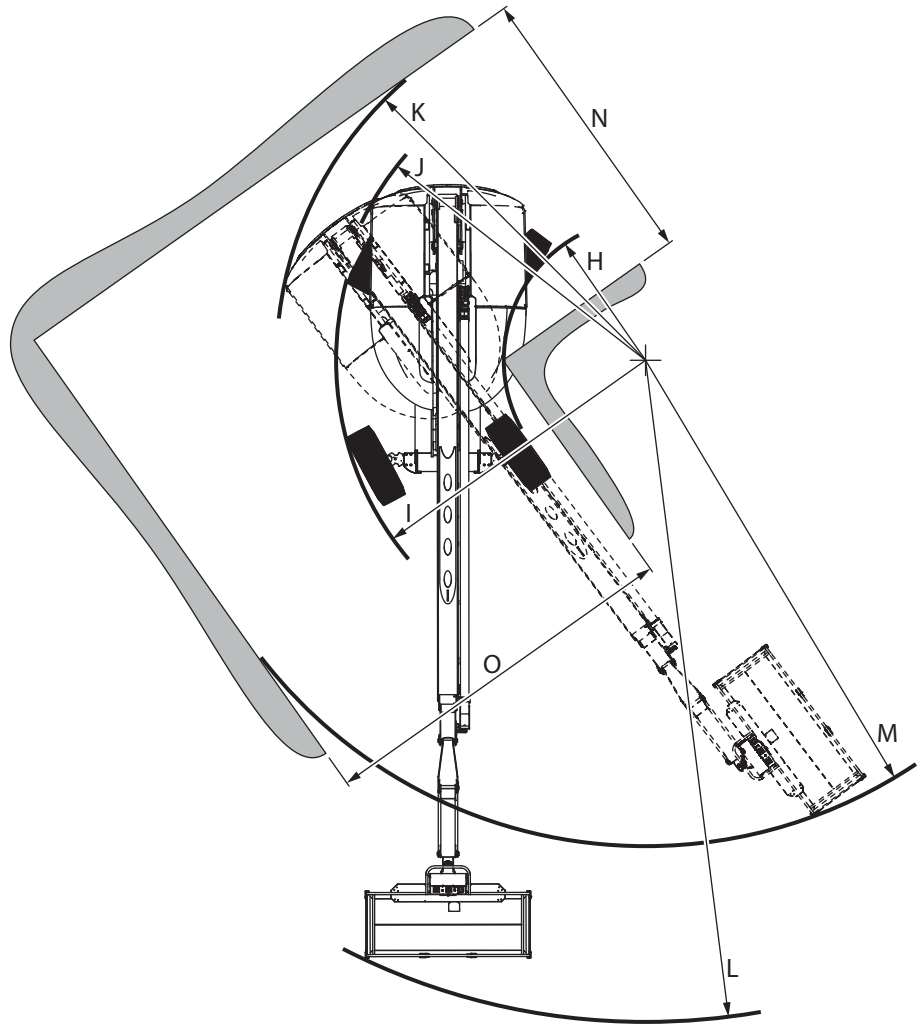
## DIMENSIONS AND DIAGRAM 260TJ

<b>A</b>	mm	10,840	
<b>A1</b>	mm	7,880	
<b>B</b>	mm	2,800	
<b>C</b>	mm	2,725 (1)	2,710 (2)
<b>C1</b>	mm	2,815 (1)	2,800 (2)
<b>D</b>	mm	2,430 (1)	2,480 (2)
<b>E</b>	mm	430 (1)	415 (2)
<b>F</b>	mm	375 (1)	355 (2)
<b>G</b>	mm	405 (1)	480 (2)

<b>H</b>	mm	2,000 (1)	1,975 (2)
<b>I</b>	mm	4,330 (1)	4,355 (2)
<b>J</b>	mm	4,420	
<b>K</b>	mm	5,180	
<b>L</b>	mm	9,270 (1)	9,280 (2)
<b>M</b>	mm	6,845 (1)	6,850 (2)
<b>N</b>	mm	4,030 (1)	4,000 (2)
<b>O</b>	mm	5,160 (1)	5,240 (2)
<b>P</b>	°/%	39 / 80 (1)	36 / 73 (2)

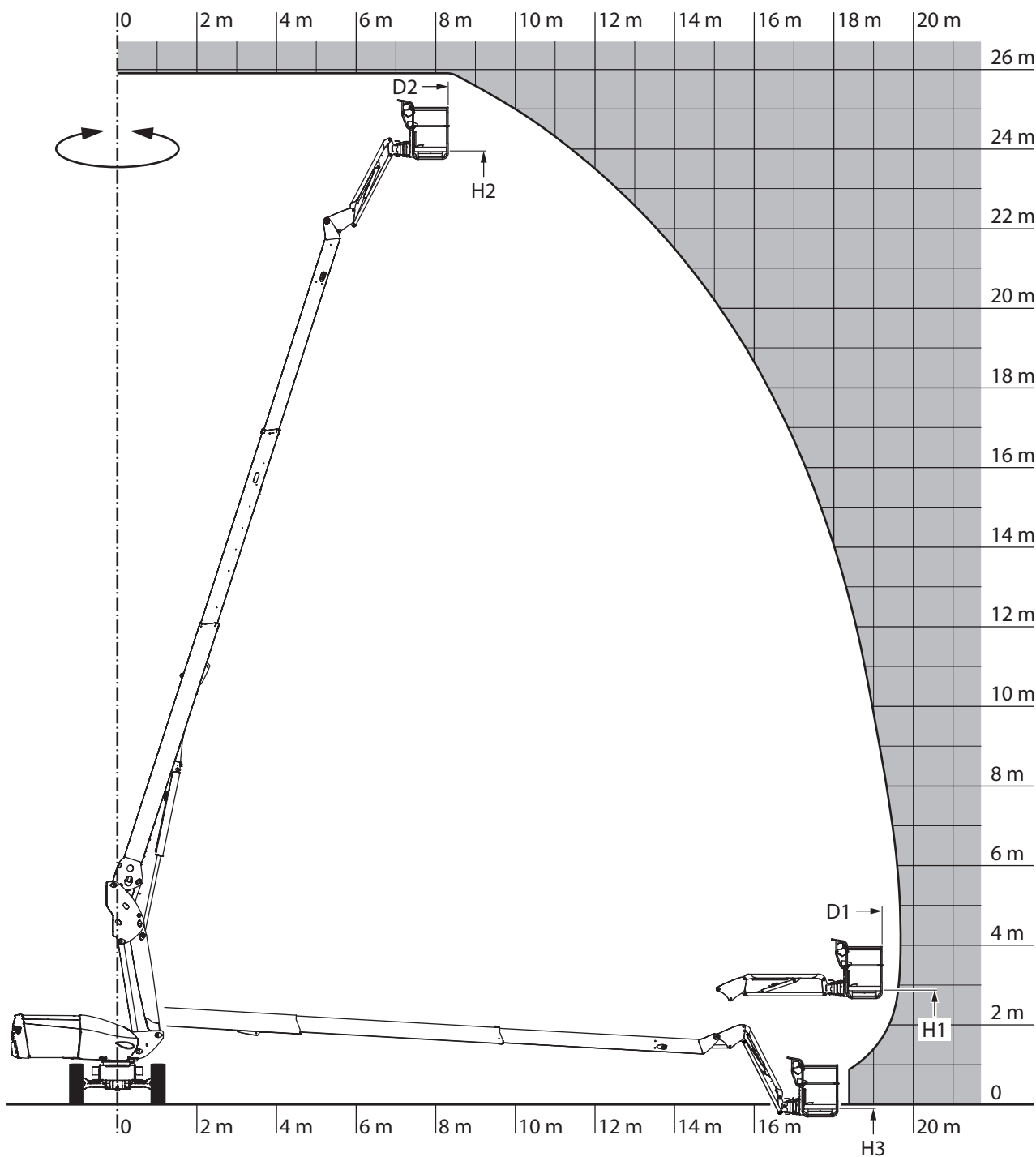
(1): Wheels SOLIDEAL HAULER-SKS (first version).

(2): Wheels SOLIDEAL SOLIDAIR AWP (second version).



<b>D1</b>	mm	19,200	
<b>H1</b>	mm	2,795 (1)	2,785 (2)
<b>D2</b>	mm	8,285	
<b>H2</b>	mm	23,910 (1)	23,890 (2)
<b>H3</b>	mm	180 (1)	195 (2)

(1): Wheels SOLIDEAL HAULER-SKS (first version).  
(2): Wheels SOLIDEAL SOLIDAIR AWP (second version).



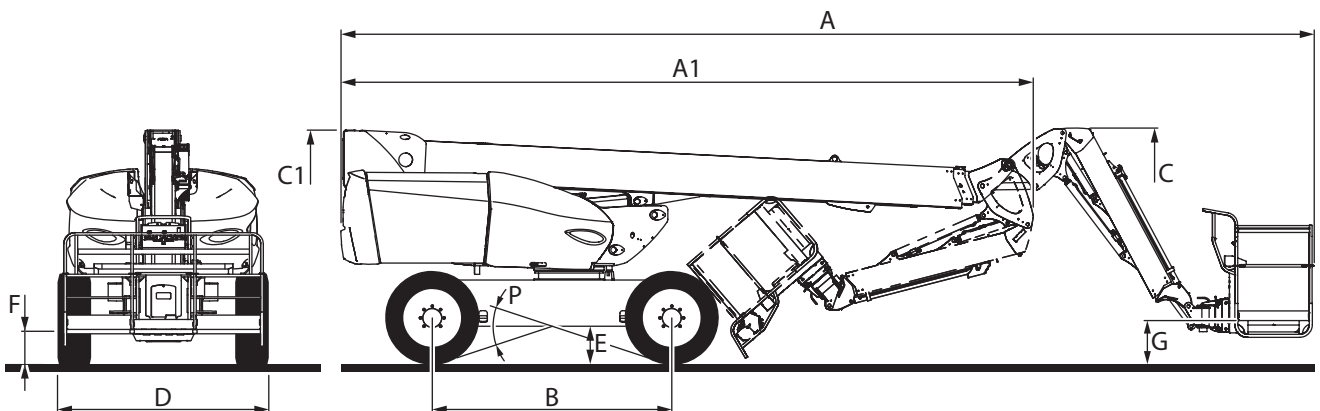
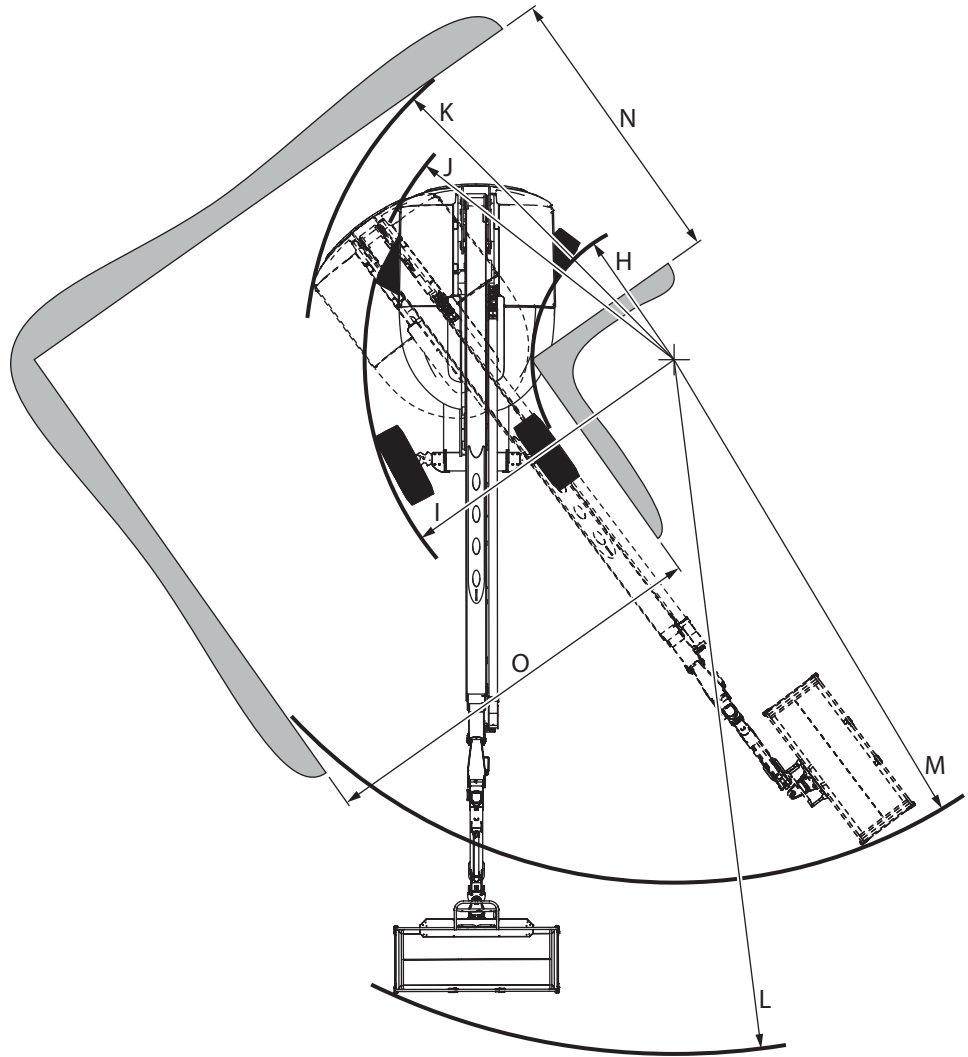
## DIMENSIONS AND DIAGRAM 280TJ

<b>A</b>	mm	11,355	
<b>A1</b>	mm	8,095	
<b>B</b>	mm	2,800	
<b>C</b>	mm	2,750 (1)	2,730 (2)
<b>C1</b>	mm	2,725 (1)	2,710 (2)
<b>D</b>	mm	2,430 (1)	2,480 (2)
<b>E</b>	mm	430 (1)	415 (2)
<b>F</b>	mm	375 (1)	355 (2)
<b>G</b>	mm	500 (1)	485 (2)

<b>H</b>	mm	2,000 (1)	1,975 (2)
<b>I</b>	mm	4,330 (1)	4,355 (2)
<b>J</b>	mm	4,420	
<b>K</b>	mm	5,180	
<b>L</b>	mm	9,750	
<b>M</b>	mm	7,340	
<b>N</b>	mm	4,030 (1)	4,000 (2)
<b>O</b>	mm	5,710 (1)	5,730 (2)
<b>P</b>	°/%	39 / 80 (1)	36 / 73 (2)

(1): Wheels SOLIDEAL HAULER-SKS (first version).

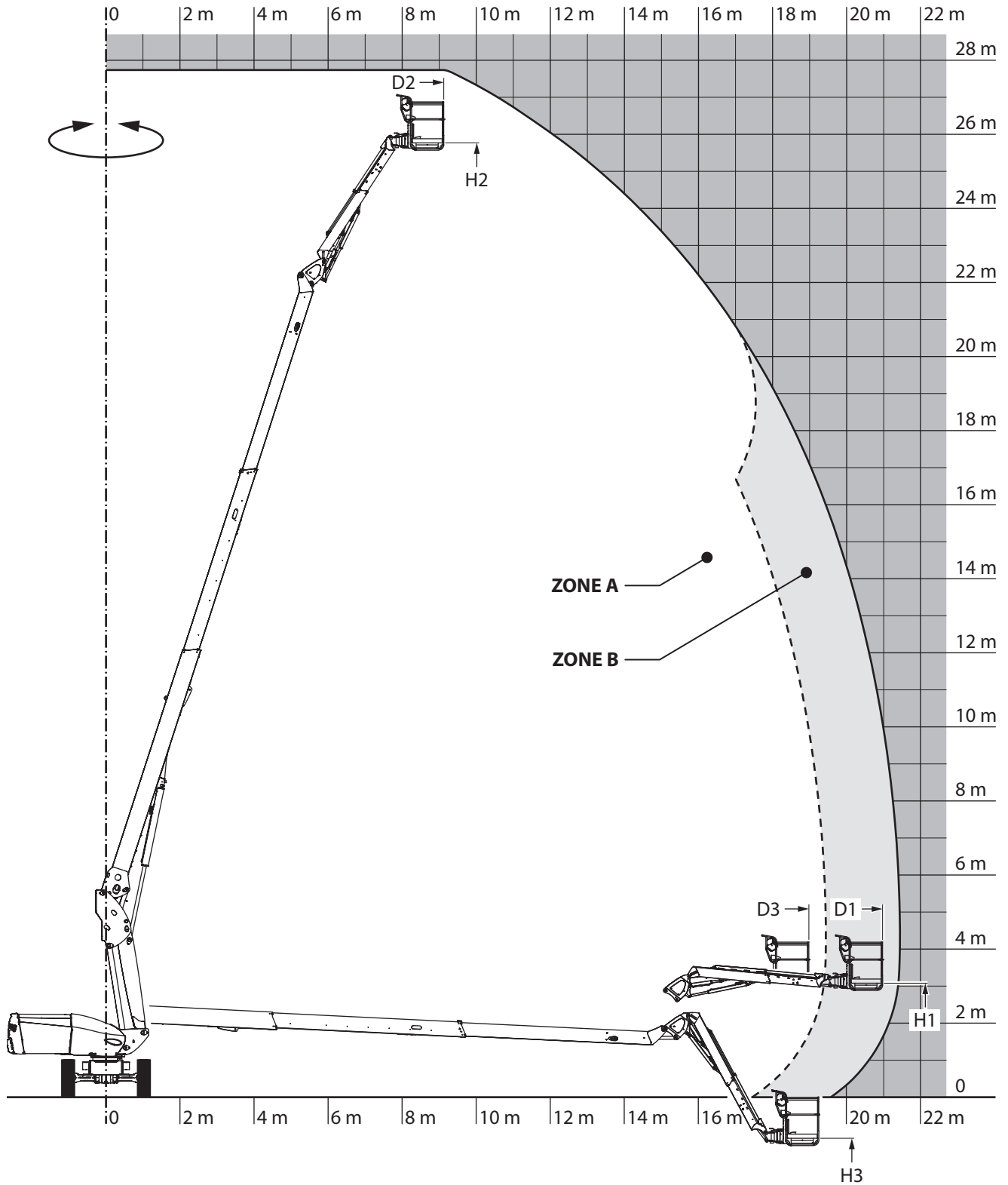
(2): Wheels SOLIDEAL SOLIDAIR AWP (second version).



<b>D1</b>	mm	20,950	
<b>H1</b>	mm	3,050 (1)	3,035 (2)
<b>D2</b>	mm	9,100	
<b>H2</b>	mm	25,750 (1)	25,735 (2)
<b>D3</b>	mm	18,950	
<b>H3</b>	mm	1,150 (1)	1,165 (2)

(1): Wheels SOLIDEAL HAULER-SKS (first version).

(2): Wheels SOLIDEAL SOLIDAIR AWP (second version).



LOAD SPECIFICATIONS		ZONE A	ZONE B	±
Platform				
- Maximum load capacity in the basket	kg (lbs)	350 (771) <b>(1)</b>	240 (529) <b>(1)</b>	-
- Maximum number of people in the basket (indoor use/ outdoor use)		3/3 <b>(1)</b>	2/2 <b>(1)</b>	-
<b>(1):</b> PIPE SUPPORT attachment or PANEL SUPPORT attachment not installed, 4-ATTACHMENTS for the specific values when an attachment is installed.				